



The Health and Transportation Nexus

CTS Planning and the Economy Research Council Meeting

Nissa Tupper, Transportation and Public Health Planner, MnDOT Sustainability & Public Health Division

March 16, 2022

MnDOT Sustainability & Public Health Division

www.dot.state.mn.us/sustainability/

Embed public health and equity into MnDOT decision making



Support Transportation that Improves Public Health



Reduce emissions from all transportation modes

Reduce Transportation Carbon Pollution

Improve Resilience of the Transportation System

Identify and factor climate risks into decision making



Lead by Example through Sustainability Efforts



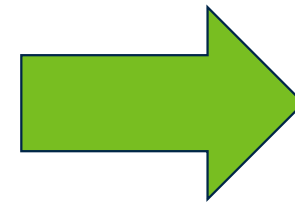
Reduce MnDOT emissions and empower staff

Differing perspectives on creating health



Health and Transportation at MnDOT

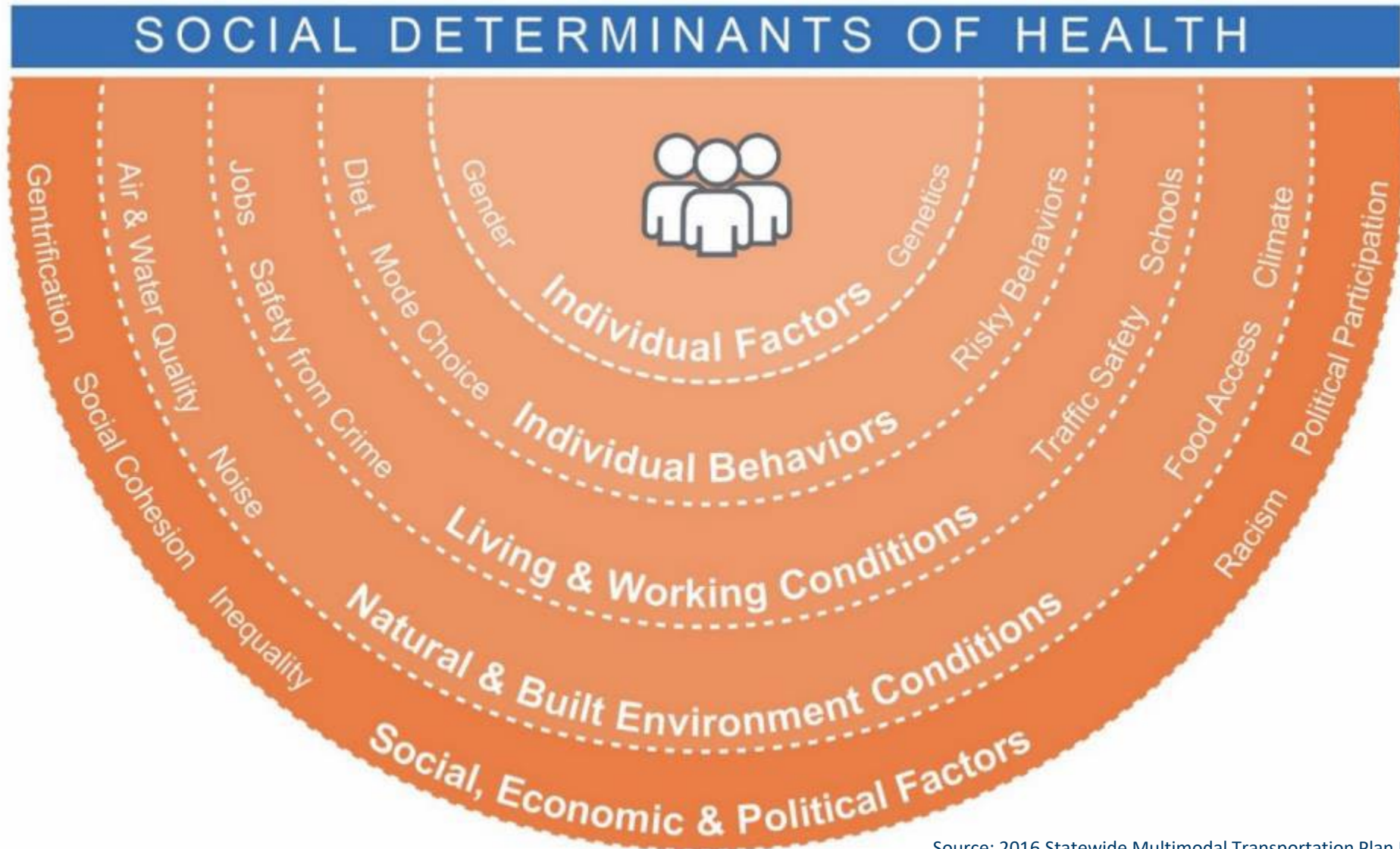
- 2015 MnDOT & MN Department of Health Interagency agreement
- 2016 Health Impact Assessment (HIA) to inform 2017 Statewide Multimodal Transportation Plan
- 2018 Transportation Equity Initiative
- 2019 Office of Sustainability and Public Health
- 2022 Active Transportation Program Update
- 2022 Complete Streets Policy and Guidance Update
- 2023 Hwy 252/I-94 Equity and Health Assessment
- ...



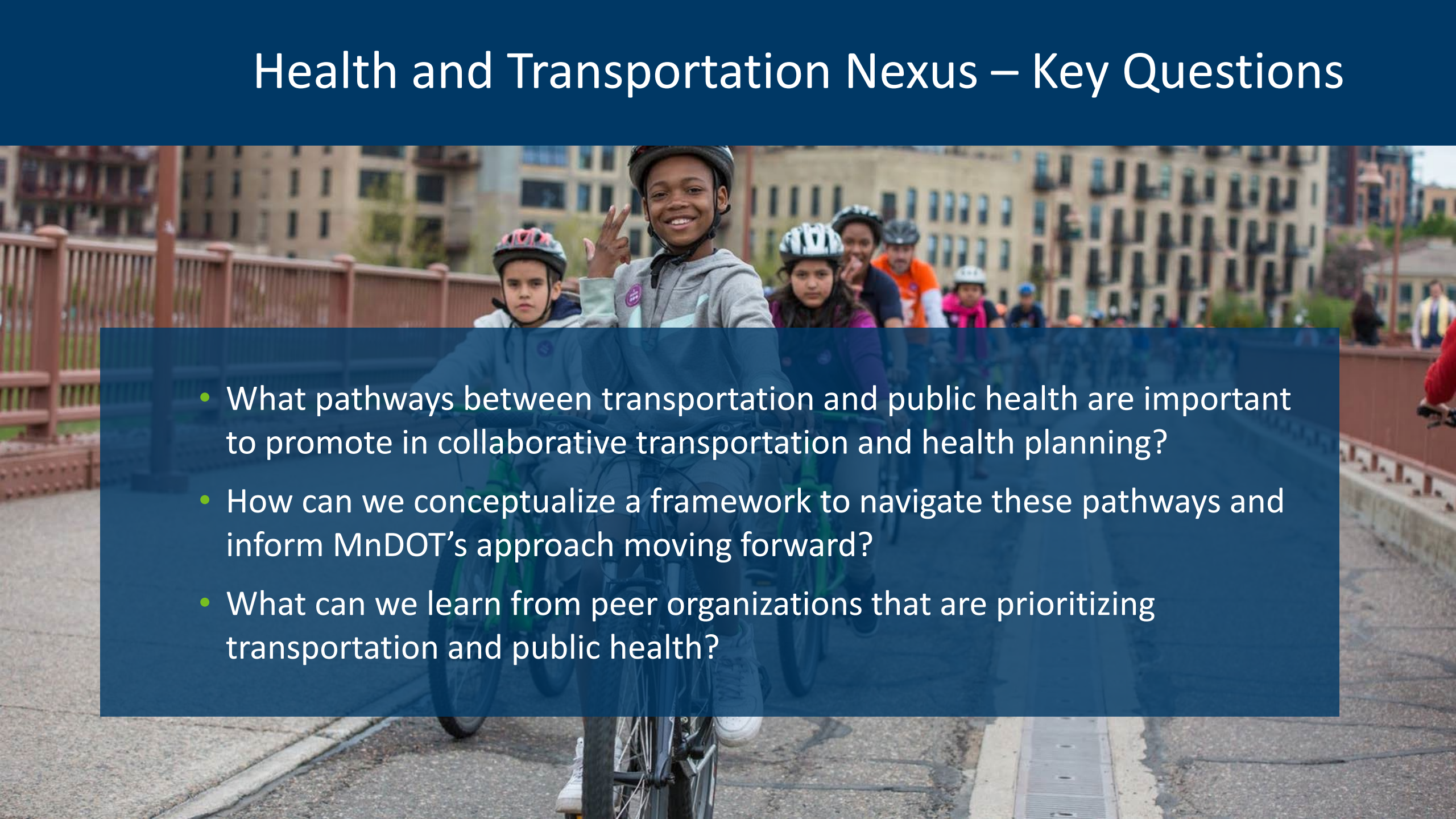
What's the internal and external narrative we should cultivate?

What guideposts should inform our efforts?

Healthy communities make healthy people



Health and Transportation Nexus – Key Questions

- 
- What pathways between transportation and public health are important to promote in collaborative transportation and health planning?
 - How can we conceptualize a framework to navigate these pathways and inform MnDOT's approach moving forward?
 - What can we learn from peer organizations that are prioritizing transportation and public health?

Health and Transportation Nexus - Research Tasks



Literature Review
July 2021-Sept. 2021



Semi-structured Interviews
Oct. 2021-Nov. 2021



Public Report
Nov. 2021-Spring 2022

Stay tuned!

- Final report available in early 2022
- MnDOT Research & Innovation website
- Nissa.tupper@state.mn.us

The screenshot shows a web browser window displaying the MnDOT Department of Transportation website. The page is titled "Research & Innovation" and features a "Project Search" section. On the left, there is a "Search Projects" box with a "Browse by:" dropdown menu containing options for "Year", "Category", "Researcher(s)", and "Technical Liaison(s)". The main content area displays a project titled "TRS: The Health and Transportation Nexus: A Conceptual Framework for Collaborative Health and Transportation Planning". The project status is "Active" and the start date is "06/04/2021". A "Subscribe for Updates" button is visible. Below the title, there is a "Summary" section, followed by "Final Deliverables:", "Related Materials:", and "Related Research:". On the right side, a "Project Personnel" box lists the Principal Investigator as Yingling Fan, the Technical Liaison as Nissa Tupper, and the Project Coordinator as Leif Halverson.

www.dot.state.mn.us/research/projects.html